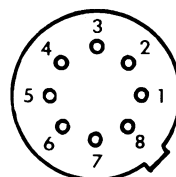


MCI-2001

OPERATIONAL

AMPLIFIER

PIN LAYOUT



Top View

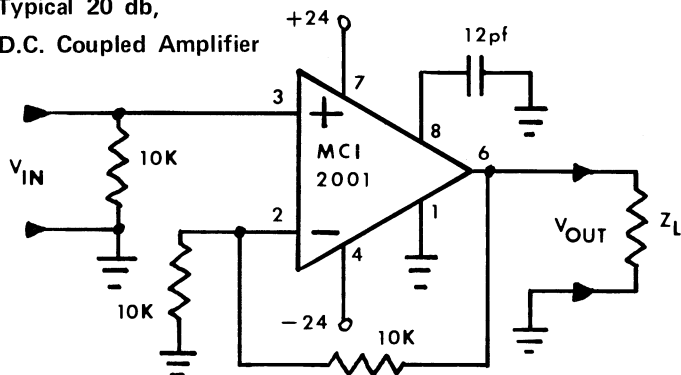
Having used thousands of discrete operational amplifiers in professional audio equipment, MCI has recognized the need for a monolithic operational amplifier optimized for audio applications. Low-noise, low distortion and excellent transient response characterize the MCI-2001 monolithic operational amplifier.

The 2001 is ideally suited to all familiar audio applications — for example, microphone preamps, summing amplifiers, boosters and line amplifiers. It has excellent stability without use of custom trimming. The output circuit is fully short circuit protected.

SPECIFICATIONS

Open loop gain	90 db.
Maximum closed loop gain for 20-20 kHz bandwidth	50 db
Typical Supply Voltage	± 24 V
Idle Current	2 ma.
Input impedance open loop	Greater than 250k ohm
Output Capability	+24 dbm into 600 ohm
Distortion	
with: Closed Loop Gain = 20 db	at 1 kc 0.04 THD
$Z_L = 600$ ohm	at 20 kc .05 THD
$V_{OUT} = +23$ dbm	
Equivalent Noise	-112 db
Case Configuration	8 pin, TO-99

Typical 20 db,
D.C. Coupled Amplifier



Summing Amplifier

